

LANDSCAPE & PLANTING PLAN

APPROACH

The brief of the landscape and planting plan is to address three main themes:

- Ecology** - To strengthen the habitat biodiversity of the site
- Community** - To create an accessible, flexible public space that welcomes people of all ages and abilities
- Renewable technology** - To demonstrate and engage with people about the art and science of generating energy from water and the sun

LANDSCAPE RESPONSE

As an island, the project represents a microcosm of the island of Great Britain, and of the planet, and so calls for a balance between wildlife sanctuary, managed land and community space. The landscape response to this call is to create a **transition of habitats** across the site from dense woodland sanctuary, through woodland edge, to courtyard, then water edge and water.

LANDSCAPE AREAS AND PLANTING STRATEGY

Area A - The narrower, north end of the island is planted fairly with a group of five downy birches (10-12 cm stem *Betula pubescens*) in amongst coppiced willow (*Salix caprea*), wayfaring shrubs (*Virburnum lantana*) and dog roses (*Rosa canina*). In partnership with Landlife (www.landlife.org.uk), this area will be seeded with cowspursley (*Anthriscus sylvestris*), buttercups (*Ranunculus acris*) and corn marigold, and densely planted with meadowsweet (*Filipendula ulmaria*) and snakes of purple loosestrife (*Lythrum salicaria*) at a density of 30 plants/m².

Area B - The central woodland edge area is planted with two wild cherries (16 – 18cm stem *Prunus avium*) that offer blossom and fruit and maintained as a woodland edge meadow plot planted with natives herbaceous plants and bulbs, including primroses (*Primula vulgaris*), water aens (*Geum rivale*), meadow buttercups (*Ranunculus acris*) and wild daffodils (*Narcissus pseudonarcissus*).

Area C - The courtyard is surfaced with compacted gravel (hoggin) edged by tiles and stone setts, into which is set a central, ground level, specially-commissioned sundial carved in stone pavers. It is furnished with a generous oak bench suitable for individuals as well as small groups, which also acts as a boundary between the planted and hard surfaced areas. There is space for people to: encounter both still and active water; to enjoy the commissioned artwork; to engage with the building, turbine and video screen; and to sit by the meadow plot and woodland area.

Boundary treatment - Areas A and B are bounded along the towpath edge by a 200cm high hornbeam hedge (Boundary D). The water-edge boundary of these planted areas is a child-safety metal fence that allow views across the site to the canal (Boundary E). The third boundary (Boundary F) along the south side of the courtyard is a metal and glazed [*] that allows people to see and be with the very active water downstream of the turbines.



Coppiced Willow [SC]



Hornbeam Hedge



Rodas Irving Bench



Meadowsweet [FU]



Dog Rose



Meadowsweet 4 [FU]



Hoggin



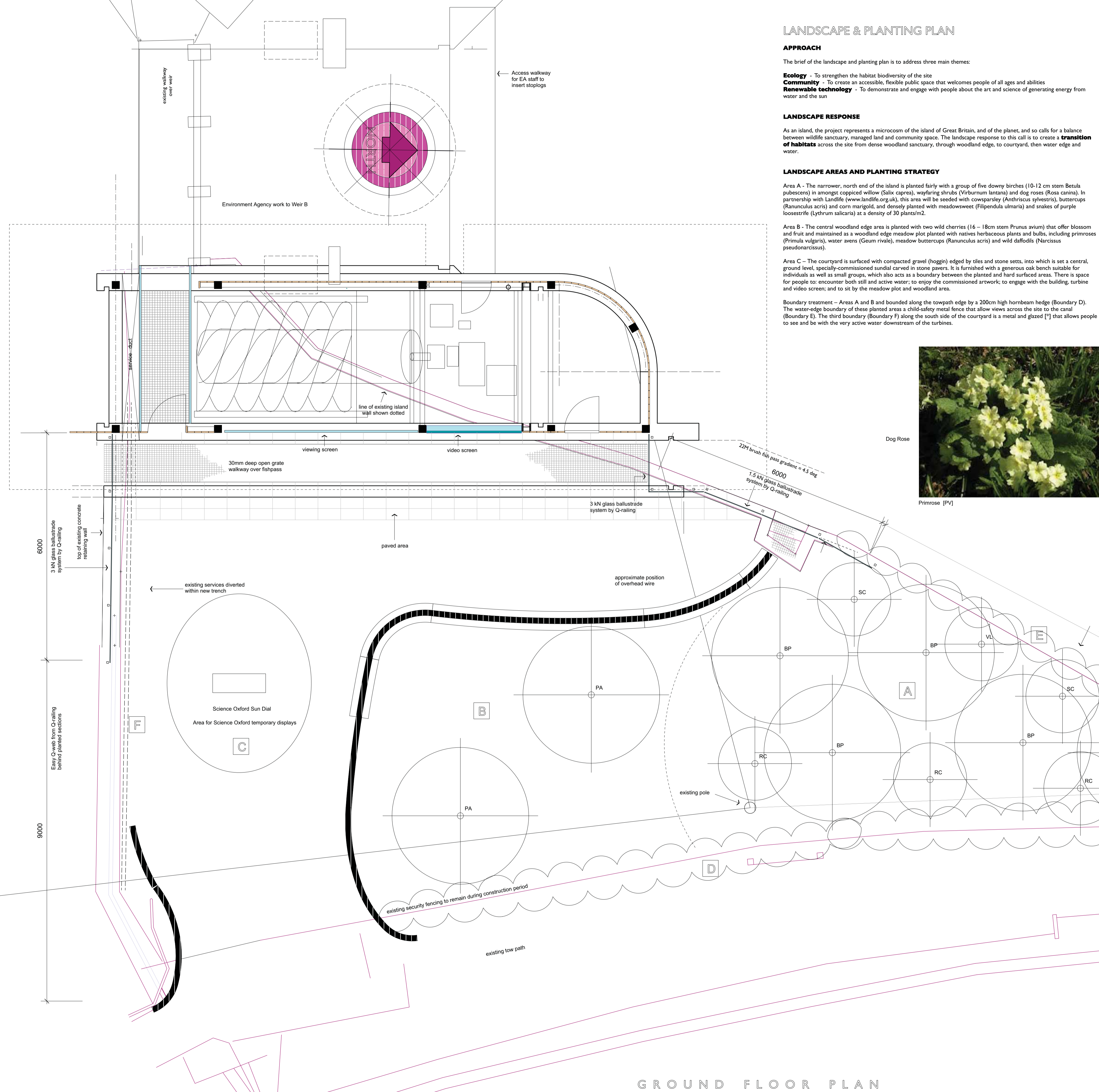
Wild Cherry [PA]



Birch [BP]



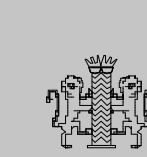
Dog Rose [RC]



N B drawings are not to be scaled; figured dimensions only to be used.
REVISIONS

A 18.3.13 Preliminary

PROJECT	OSNEY MICRO-HYDRO			@ A1	
TITLE	SOFT LANDSCAPE				
DRAWING NO.	096.21	REVISION NO.	A	SCALE	I - 50
				DATE	MARCH 2013



23 Park End Street Oxford OX1 1HU
Tel. 01865 251444 E-mail david@hammondarchitect.co.uk
David Hammond DipArch. R.I.B.A. Chartered Architect
registered practice no. 2194237

